

**TOOLS NEEDED**

FLOOR JACK  
JACK STANDS  
METRIC TOOLS  
FLATE HEAD SCEW DRIVER

**BILL OF MATERIALS**

M03724 X 2 FT SPACERS  
M03858 X 2 REAR SPACERS  
BU76116 X HARDWARE



**KA09100BK  
2003-05 KIA SORENTO  
2WD/4WD FRONT & REAR KIT  
2.5' LIFT**



[www.Daystaproducts.com](http://www.Daystaproducts.com)

Tech Support Contact Info

[Tech@DaystarWeb.com](mailto:Tech@DaystarWeb.com)

Phone: 623.907.0081

Fax: 623.907.0088

841 South 71<sup>st</sup> Avenue

Phoenix, AZ 85043

Instruction Sheet P11415

2008 Daystar Products International Inc.

Thank you for choosing Daystar Products

Daystar recommends a certified technician install this system . In addition to these instruction , professional knowledge of disassemble/reassembly procedures as well as post instructions checks must be known. Attempts to install this system without this knowledge and expertise may jeopardize the integrity and/or operating of the vehicle.

Please read all the instructions before beginning the installation. Check the kit hardware against the parts list. Be sure you have all the needed parts and understand where they go. If anything is missing , do not proceed with the installation, Call Daystar Products to obtain needed items.

### Product Use Information

As a general rule, the taller a vehicle is the easier it will roll. We strongly recommend , because of rollover possibility, that Seat belts and shoulder harness be worn at all times. Avoid situations where a side rollover may occur.

Braking performance and capabilities are decreased when significantly large/heaver tires and wheels are used. Take this into consideration while driving. Also , speedometer recalibration is necessary when larger tires are installed.

Do no add, alter, or fabricate any factory or after-market parts which increase vehicle height over the intended height of the Daystar Product purchased. Mixing component brands, lifts, and/or combining body lift with suspension lift voids all warranties. Daystar makes no claims regarding lifting devices and excludes any and all implied claims. We will not be responsible for any products that is altered.

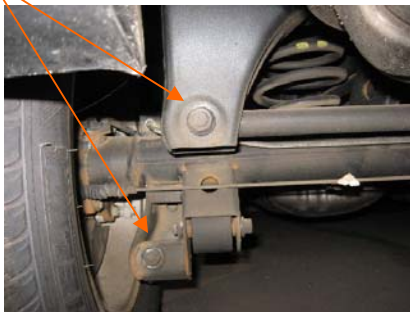
### Notice to Dealer and Vehicle Owner

Any vehicle equipped with any Daystar Product must have the “Warning to driver” decal installed on the sun visor or dash. The decal is to act a constant reminder for whoever is operating the vehicle of its unique handling characteristics. **INSTALLING DEALER**— Its is your responsibility to install the warning decal and forward these instructions on too the vehicle owner for review and to be kept in the vehicle for service life.

After installation occurs, a qualified alignment facility is required to align the vehicle to factory specs.



40. Jack up the axle and reconnect the shocks, track bar and sway bar end link. Be sure the coil springs are seated properly.

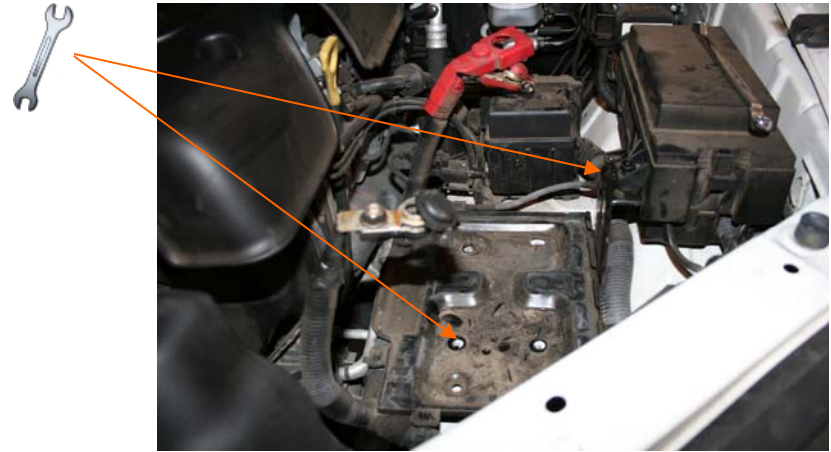


- 41. Tighten all the shock bolts, track bar bolt, and sway bar links to factory specifications.
- 42. Install the rear tires.
- 43. Lower off the jack stands.
- 44. Tighten front and rear lug nuts to factory specifications.
- 45. Double-check all fasteners for proper clearances and torque.

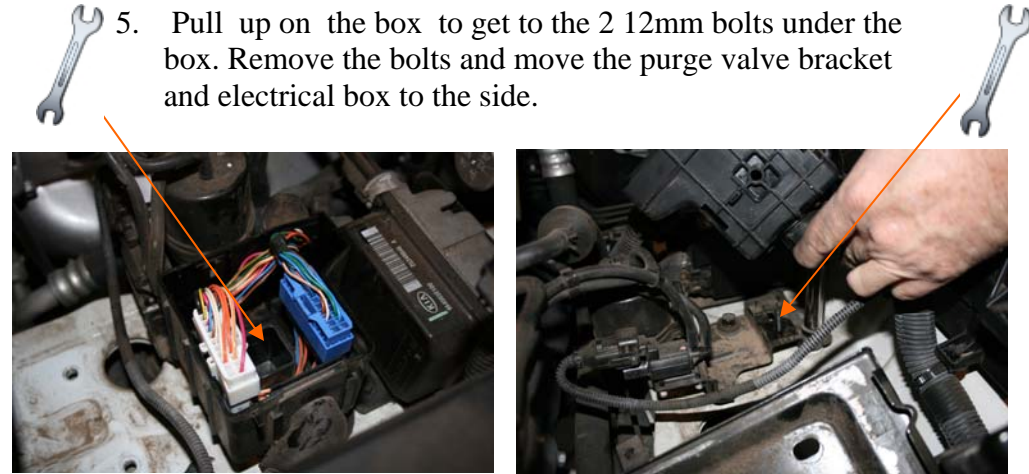


### Installation steps

- 1. Place the vehicle on level ground.
- 2. Open the hood and disconnect the battery. Remove the battery from the vehicle.
- 3. Remove the 4 14mm battery tray bolts and the one nut at the fuse box. Push the battery tray to the side.



- 4. Remove the cover off the electrical plug box to the rear of the battery tray and the remove 10mm nut from the center of the box .
- 5. Pull up on the box to get to the 2 12mm bolts under the box. Remove the bolts and move the purge valve bracket and electrical box to the side.





6. With the battery tray, electrical box, and purge valve bracket out of the way you should now be able to access the 3 upper strut nuts.



7. Loosen the 1 clamp for the air intake hose at the air filter box and unplug the electrical connector.  
8. Release the 4 air filter cover clips.  
9. Remove the lid and the air filter.



10. Disconnect the intake hose leading from the lower filter box to the fender. Remove the three bolts retaining the lower air filter box, pull up on the base, and remove from vehicle. You should now be able to access the three upper strut nuts on the passenger side.



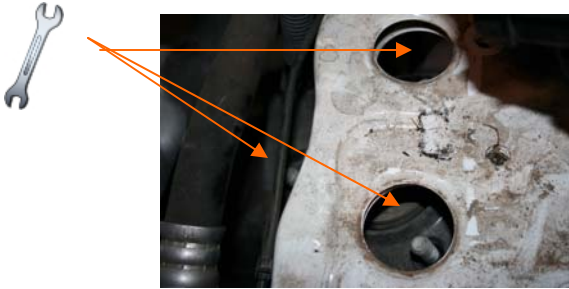
36. Lower the axle using the floor jack until the coil springs are loose so that you can remove them.  
37. Remove the stock spring isolator and place it in the supplied lift spacer.



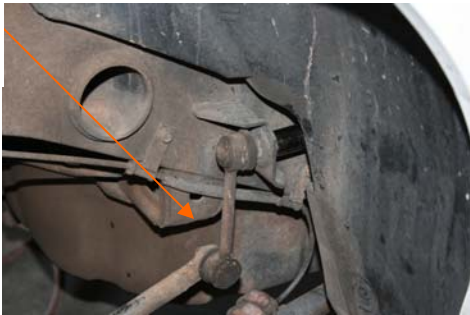
38. Position the coil spring spacer assembly on top of the coil spring and be sure it is indexed properly. Install the coil spring and spacer in the upper spring mount.



- 29. Reinstall the ABS sensor and tighten all the upper strut bolts and lower bolts to factory specifications.
- 31. Repeat steps 14 through 29 on the passenger side.
- 29. Install the battery tray and air box assemblies in the opposite order they were removed..



- 31. After both front lift spacers are installed , re-install the front wheels and lower to the ground and re-install the sway bar end links.
- 32. Jack up the rear suspension and put the jack stands under the frame rail in front of the rear tires. Remove the rear tires.
- 33. Leave the floor jack under the axle.
- 34. Disconnect the sway bar end links and rear shocks at the axle. Unbolt the track bar at the frame on the driver side.



- 11. Jack up the vehicle and place jack stands under the frame rail behind the front tires. Lower the vehicle on to the stands.
- 12. Remove the two front tires.
- 13. Disconnect both the driver and passenger side sway bar end links. You may have to place a floor jack under the lower control arm and take some load off the end link.



- 14. Unbolt the brake line bracket from the strut.
- 15. Carefully remove the ABS sensor from the front wheel.



- 16. Remove the 3 upper strut nuts.
- 17. Remove the lower strut nut.





17. Make a note of how the brake line is routed around the strut. Remove the upper ball joint pinch bolt and ABS and brake line brackets.
18. Push down on the upper arm to relieve the pressure on the pinch bolt to pull out the bolt.



20. With the upper A-arm separated from the knuckle, push down on the lower control arm to free the strut from the upper mount.
21. Pull out the lower strut bolt and remove the strut.
22. Install three of the supplied 3 stud extenders with thread lock over the factory studs..



23. Install the lift spacer on top of the strut plat with the 3 stud extenders.



24. Install the strut by pushing the upper control arm up and the lower control arm down.
25. Make sure that the brake line is routed properly around the strut.



26. Install the factory nuts on the 3 upper strut studs but leave loose.
27. Install the lower strut bolt and nut.
28. Reattach the upper ball joint to the knuckle using the factory pinch bolt. Be sure to attach the brake line and ABS wire on either side of the bolt. Tighten to factory specifications.

